



CUBIEBOARD

<http://cubieboard.org>

How To Distinguish The CubieBoard2 Version

Website: <http://cubieboard.org/>
Email: support@cubietech.com



Version	Author	Modification	Check
V-1.0-20160408	Aaron.L	Init version	



Table of Contents

1. Abstract.....	4
2. CubieBoard2 Versions	4
2.1. About production time.....	4
2.2. About Storage.....	4
3. CubieBoard2 Versions	4
3.1. 20120909 version	4
3.1.1. CubieBoard2 20120909 Nand	5
3.1.2. CubieBoard2 20120909 TSD	6
3.1.3. CubieBoard2 20120909 DualCard	7
3.2. 20151211 Version.....	8
3.2.1. CubieBoard2 20151211 EMMC.....	8
3.2.2. CubieBoard2 20151211 TSD	9
4. Also see	9



1. Abstract

This document will help users distinguish different CubieBoard2 version.

2. CubieBoard2 Versions

Due to production time and storage media , up to now ,CubieBoard2 released 5 version .

2.1. About production time

CubieBoard2 has 2 production batch: 20120909&20151211

2.2. About Storage

CubieBoard2 20120909 can support Nand ,TSD& TF-Card

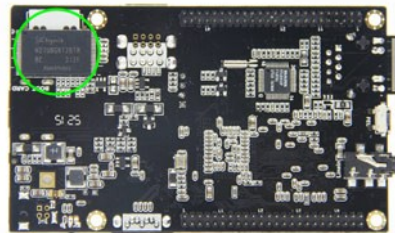
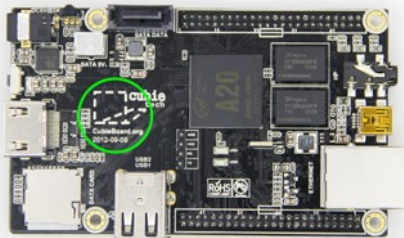
CubieBoard2 20151211 can support EMMC,TSD&TF-Card

3. CubieBoard2 Versions

3.1. 20120909 version



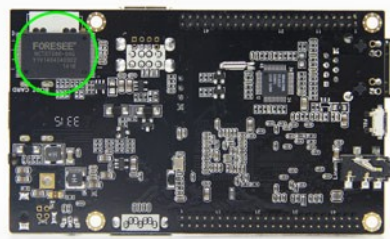
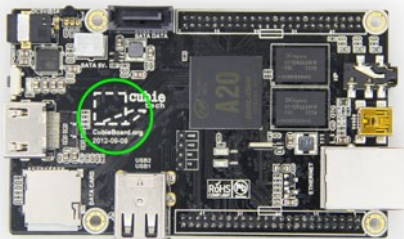
3.1.1. CubieBoard2 20120909 Nand



CubieBoard2 20120909 Nand



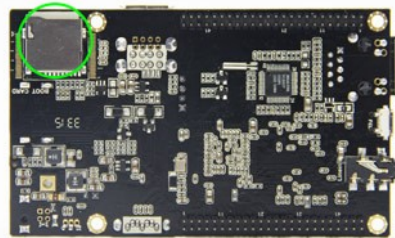
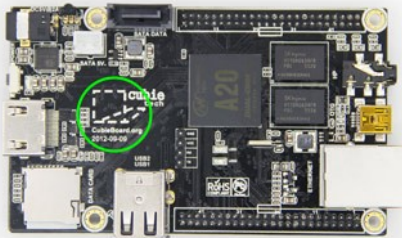
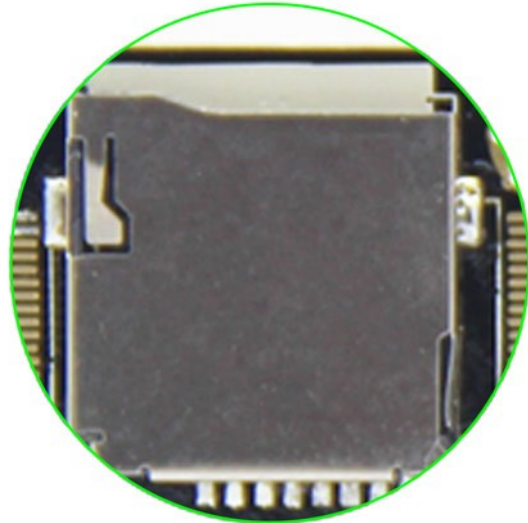
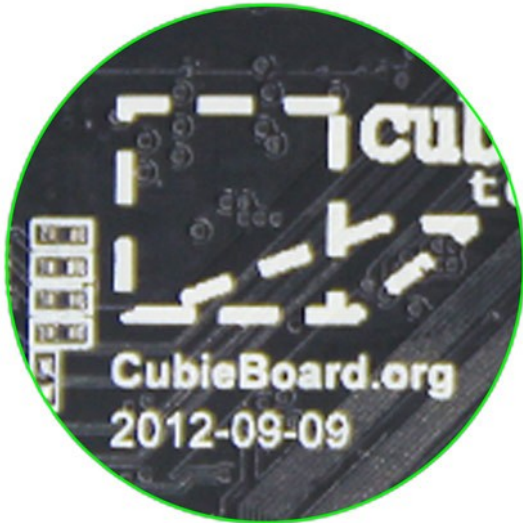
3.1.2. CubieBoard2 20120909 TSD



CubieBoard2 20120909 TSD



3.1.3. CubieBoard2 20120909 DualCard

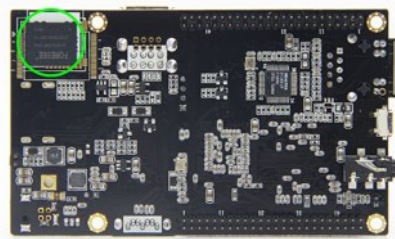
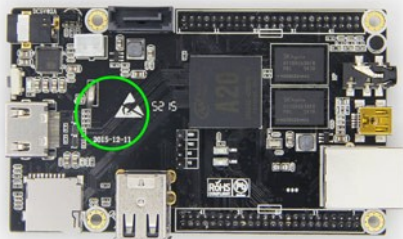


CubieBoard2 20120909 DualCard



3.2. 20151211 Version

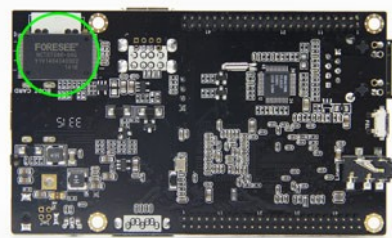
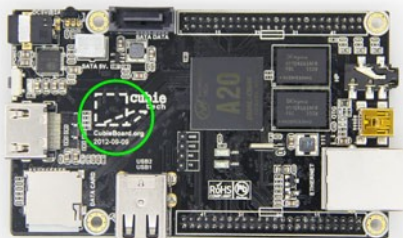
3.2.1. CubieBoard2 20151211 EMMC



CubieBoard2 20151211 EMMC



3.2.2. CubieBoard2 20151211 TSD



CubieBoard2 20120909 TSD

4. Also see

How to chose the storage media for Cubieboards:

<http://cubieboard.org/2014/08/12/how-to-choose-the-storage-media-in-cubieboard/>

Website: <http://cubieboard.org/>

Email: support@cubietech.com